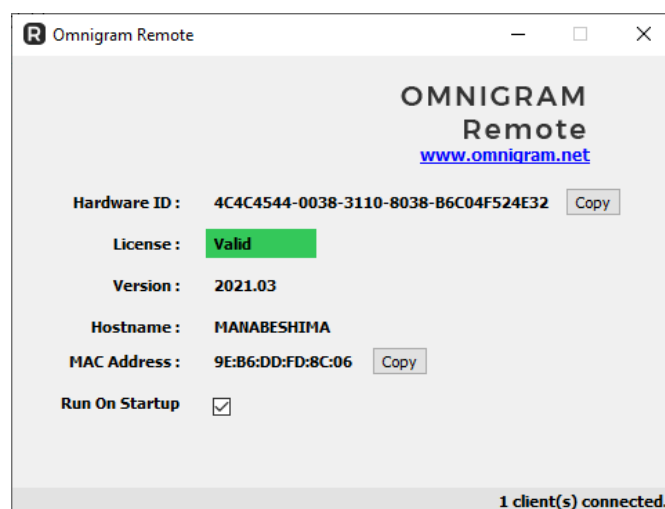


## Remote

Remote is a Windows based app that allows the host system to be network-controlled from a conventional AV control system like Extron, Crestron, AMX or others.

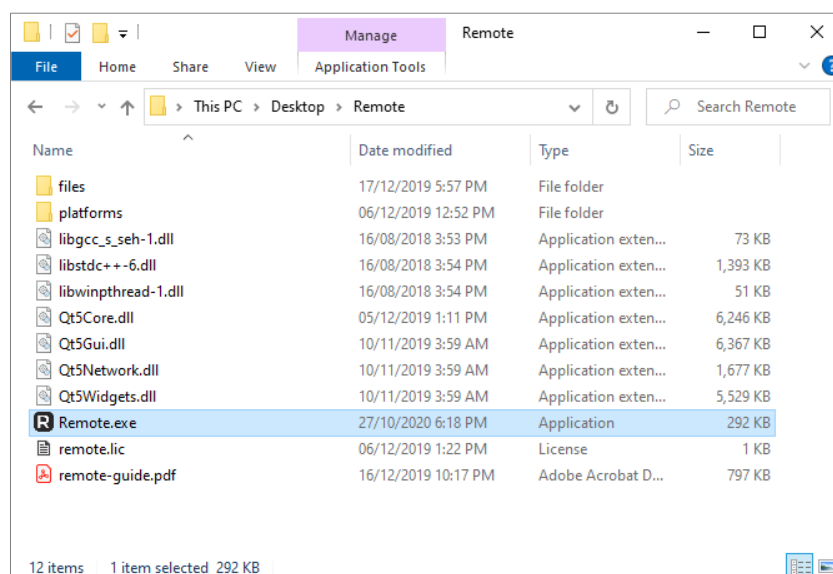
The app remains a work in progress and currently support the following commands:

- Shutdown or cancel an existing scheduled shutdown.
- Request computer status and show dialog box identification.
- Open and navigate Microsoft PowerPoint presentation slides.
- Open and close video through VideoLAN VLC software.
- Switch layouts (using DataPath SDK).
- Show/hide Windows taskbar.
- Adjust host system master volume and muting or unmuting.

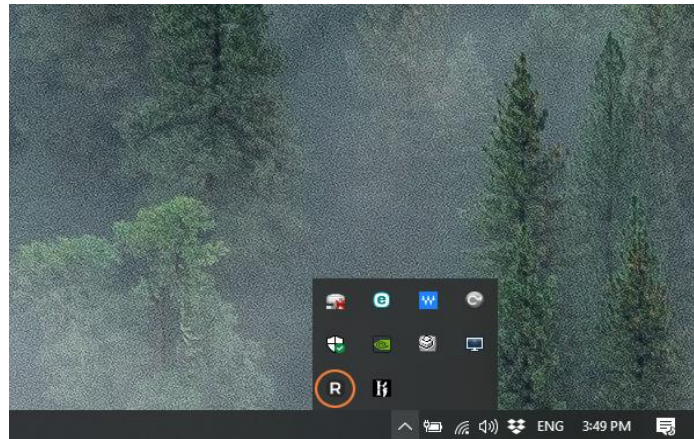


## How to run?

The app is lightweight, portable and doesn't need to be installed. This is useful for those instances where an administrator account is required before an installation can proceed.



To run the app, simply extract the zip file and double-click **Remote.exe**. Once running, the app will minimize itself to the taskbar. This is by design since the app is meant to be as unobtrusive as possible.



To see the app window, double-click the app icon on the taskbar and it will show up in its maximized form.

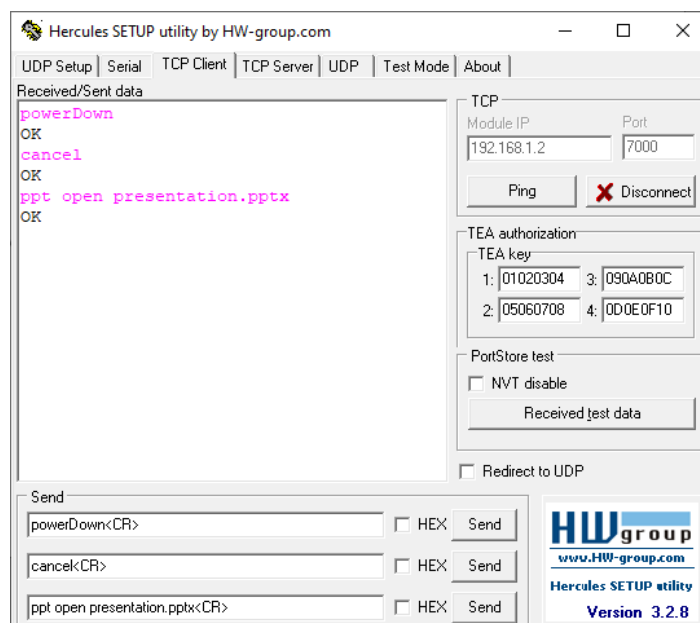
The app requires a license to run permanently, without the license, the app will be in demo mode and will quit after 15 minutes.

## License

To get a license, please copy and send your 36 characters unique hardware ID to [sales@omnigram.net](mailto:sales@omnigram.net). Once you received the license file, put the file in the same folder as **Remote.exe** to use the app.

## Usage

Once you run the app, you can check **“Run On Startup”** to make sure the app is started as soon as Windows boot up. To test the app, you can use Hercules utility to test issue the command. The app listens on both TCP and UDP port number 7000.



## Available TCP Commands

Commands are to be terminated with carriage return.

Command	Description
powerDown	schedule shutdown in 1 minute
cancel	cancel a schedule shutdown
ppt open [filename.pptx]	open PowerPoint file under <b>files</b> folder and go into presentation mode (requires Microsoft PowerPoint 2013)
ppt next	go to next slide
ppt prev	go to previous slide
ppt close	close PowerPoint
vlc open [filename.mp4]	open and play video file under <b>files</b> folder (requires VLC)
vlc play	play or pause the opened video
vlc seek	seek to first frame and pause
vlc close	close VLC video player
layout A	open layout A (as defined in A.bat)
layout close	close all layout
taskbar hide	hide windows taskbar
taskbar show	show windows taskbar
volume [level]	set master volume (value ranges from 0 to 100)
volume ?	get master volume (value ranges from 0 to 100)
volume [mute unmute]	mute or unmute master volume

## Available UDP Commands

Commands are to be terminated with carriage return.

Command	Description
9C:B6:D0:FD:50:67,powerDown	shutdown to a specific computer, matching the MAC address
9C:B6:D0:FD:50:67,status	request the computer status matching the MAC address (1 = on, 2 is off)
9C:B6:D0:FD:50:67,identify	show an identify dialog box on computer matching the MAC address
powerDown	broadcast a schedule shutdown to all computers
identify	show identify dialog box on all computers
who	broadcast to all computers and get all MAC addresses and hostnames